



CHERRYWOOD

# MEASURE L BOND UPDATE

January 16, 2018

## Measure L – Overview

- Phase 2 Project Update
- Phase 3 Project Update
- Phase 4 Project Update
- FIS and Classroom Furniture Update
- Program Schedule Review
- Presentations
  - Cherrywood Modernization & FIS
  - Brooktree Modernization & FIS
  - Morrill Modernization & FIS

## Measure L – Phase 2 Projects

- Vinci Park Elementary School - FIS
  - Exterior Canopy
    - Awaiting approval from CGS (California Geological Survey)
- Central Kitchen
  - The Punch list is completed. The paving of the parking lot was completed over the holiday break.
- Pavement Rehabilitation – Piedmont Middle School
  - Received comments from DSA setting up back check appointment
  - Bid early February 2018
  - Construction starts June 2018

## Measure L – Phase 2 Projects

- Vinci Park FIS Project – Project is on schedule



Main FIS space

## Measure L – Phase 3 Projects

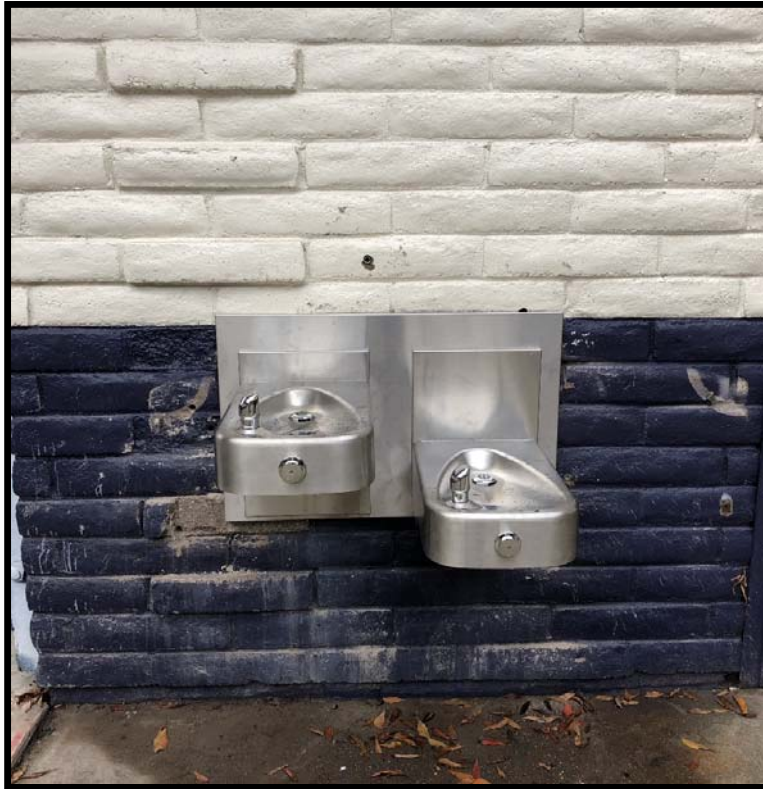
Laneview FIS Project – Project is on schedule



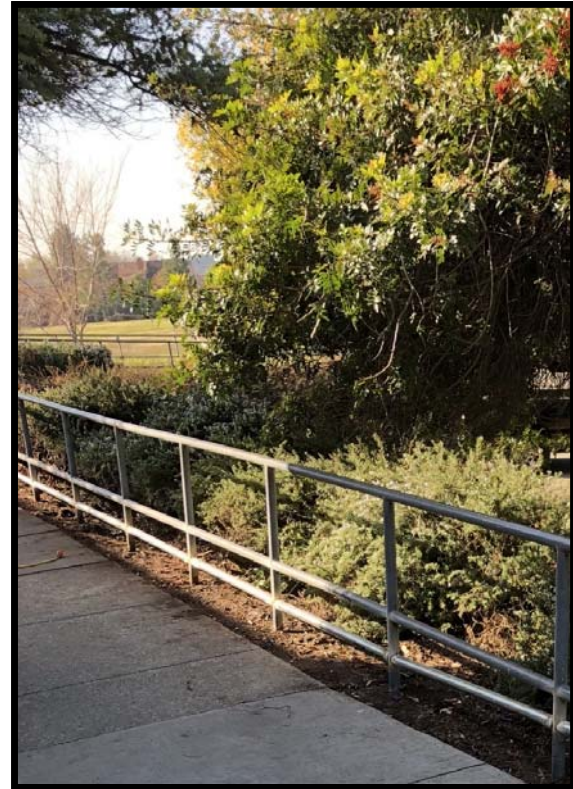
Small group area

## Measure L – Phase 3 Projects

### Laneview FIS Project



ADA upgrades drinking fountain replacement



ADA upgrades wheel chair railing

## Measure L – Phase 3 Projects

Majestic Way FIS Project – Project is on schedule



Main FIS space

## Measure L – Phase 3 Projects

### Majestic Way FIS Project



FIS sink area



## Measure L – Furniture

- FIS Furniture - Vinci Park
  - Awaiting final quote from vendor
  - Furniture delivery March 2018
- FIS Furniture - Laneview & Majestic Way
  - Ordered furniture
  - Furniture delivery mid February 2018
- FIS Furniture - 2018 Project
  - Meeting with Principal in February 2018
- Classroom Furniture - 2018 Projects
  - Submitting order to vendor for quote in February 2018

## Measure L – Phase 4 Projects

- Modernization Projects
  - Ruskin Elementary School - FIS
    - DSA back check - January 12, 2018
    - Receive bids in March 2018
  - Piedmont Middle School - FIS
    - DSA back check - January 30, 2018
    - Receive bids in March 2018
  - Brooktree Elementary School
    - Received comments from DSA setting up back check appointment
  - Cherrywood Elementary School
    - Submit to DSA - December 12, 2017
  - Toyon Elementary School
    - Meet with DSA to review structural upgrades in January
    - Submit to DSA - TBD
  - Morrill Middle School
    - Submit to DSA – December 8, 2017



## Presentations

- Cherrywood Modernization & FIS
- Brooktree Modernization & FIS
- Morrill Modernization & FIS

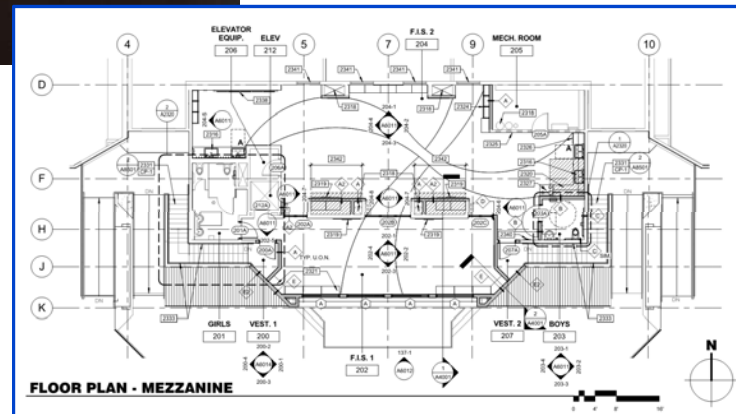


# CHERRYWOOD

*Design to CD*



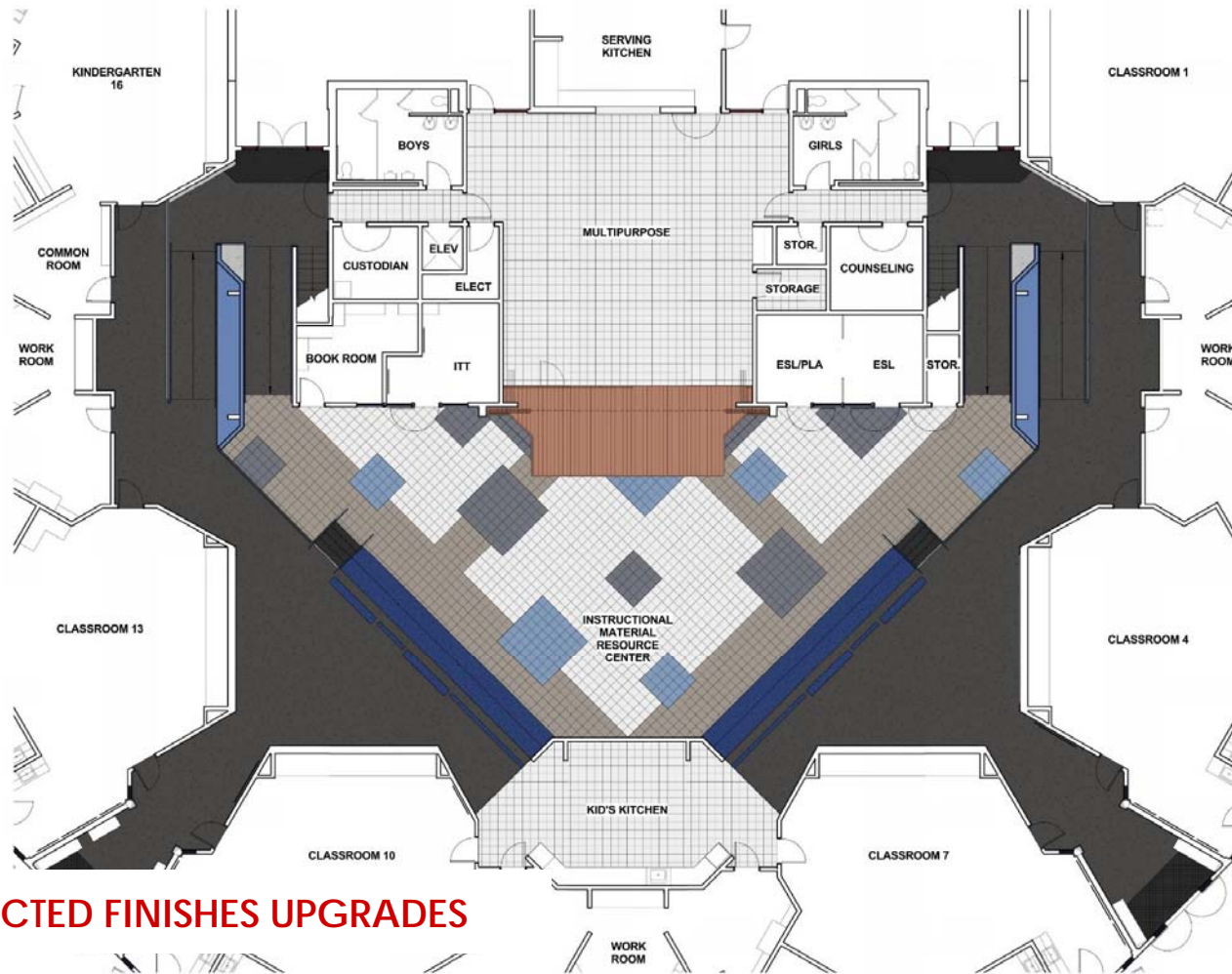
**BRAINSTORMING  
AND COLLABORATION...**



## Scope Overview

Convert old administration space (2<sup>nd</sup> level) to FIS Space

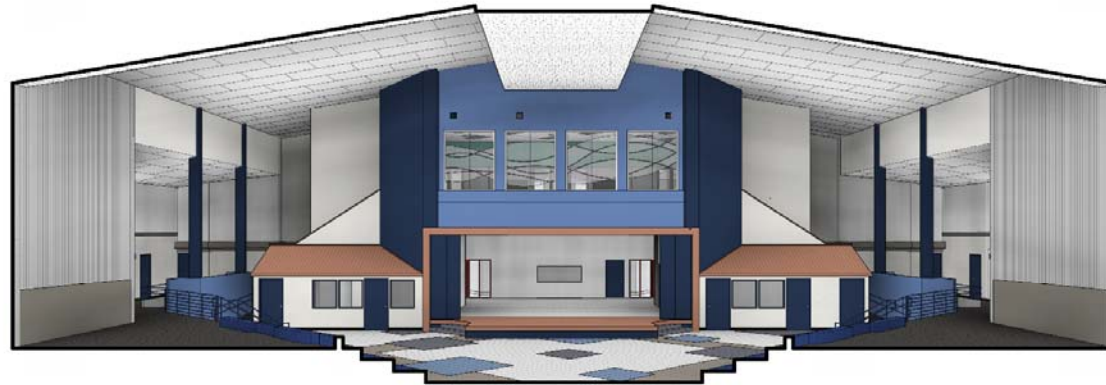
- Classroom Renovations
  - New Finishes – Carpet, VCT, Paint
- Drinking Fountain Upgrades
- Some Glazing Replacement
- Stage Curtain & AV Upgrades
- Exterior concrete walkway replacement
- Fencing replacement



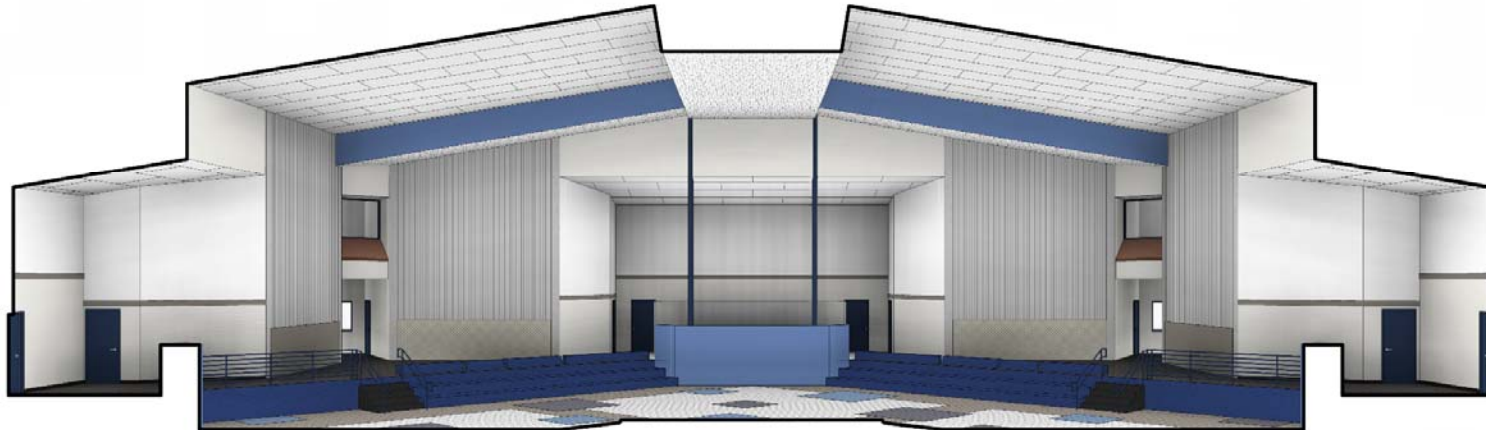
**SELECTED FINISHES UPGRADES**

**MULTIPURPOSE / RESOURCE AREA**





VIEW TOWARDS PRESENTATION PLATFORM

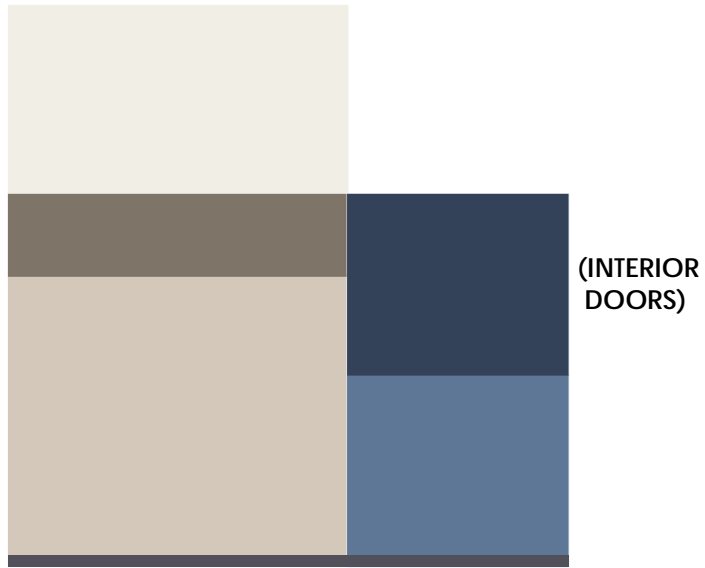


VIEW TOWARDS CLASSROOMS

## MULTIPURPOSE / RESOURCE AREA







(INTERIOR  
DOORS)

WALL - PAINT



TACKABLE PANELING



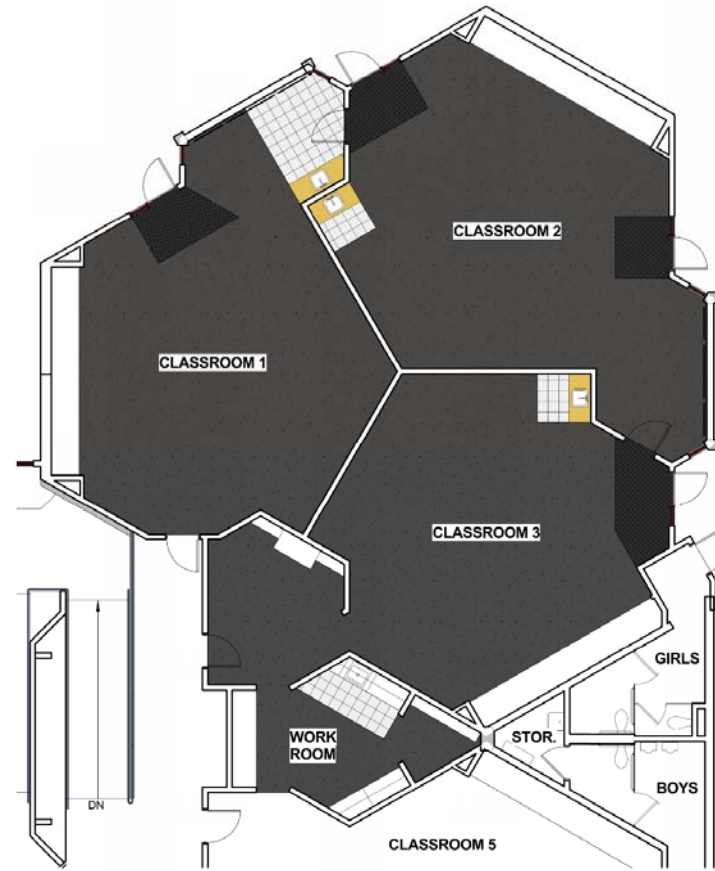
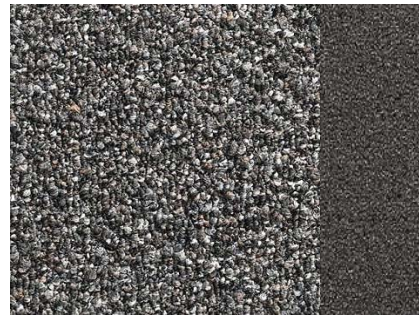
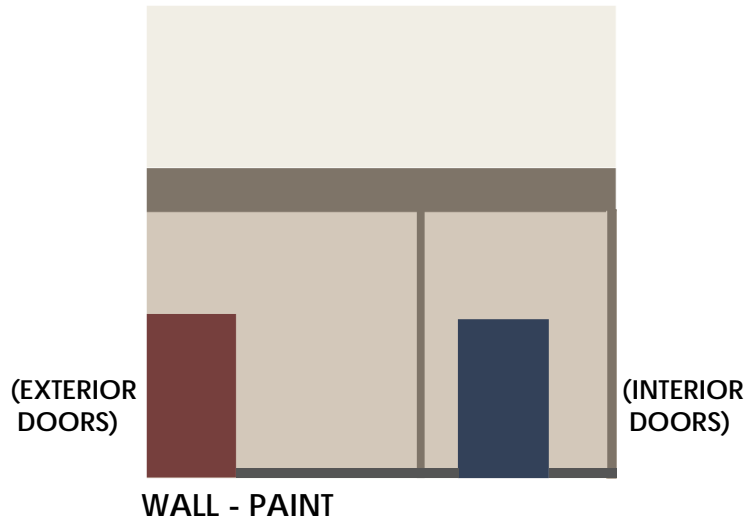
FLOORING - CARPET



FLOORING - VCT

# MULTIPURPOSE - MATERIALS & COLORS



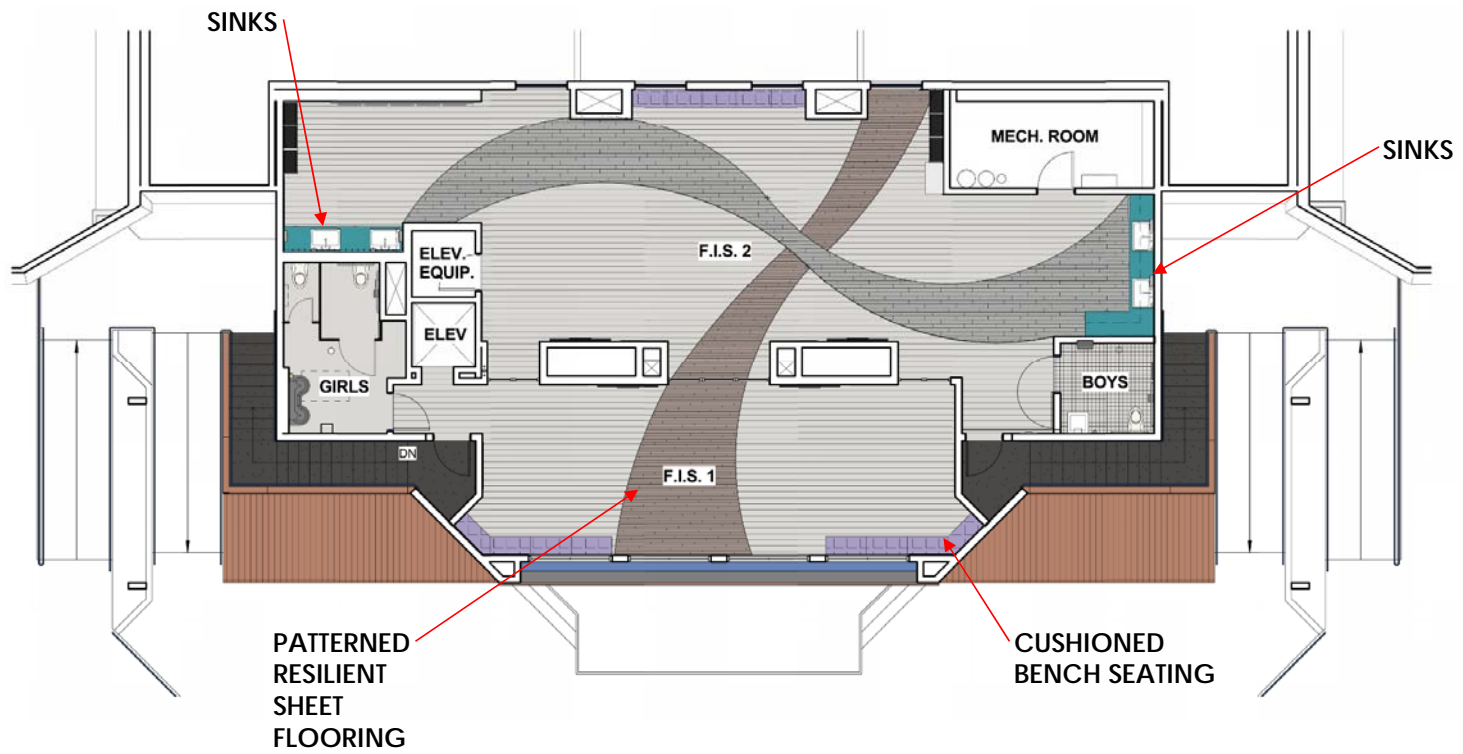


TYPICAL CLASSROOM FLOOR PLAN

**SELECTED FINISHES UPGRADES**

**CLASSROOM MATERIALS & COLORS**

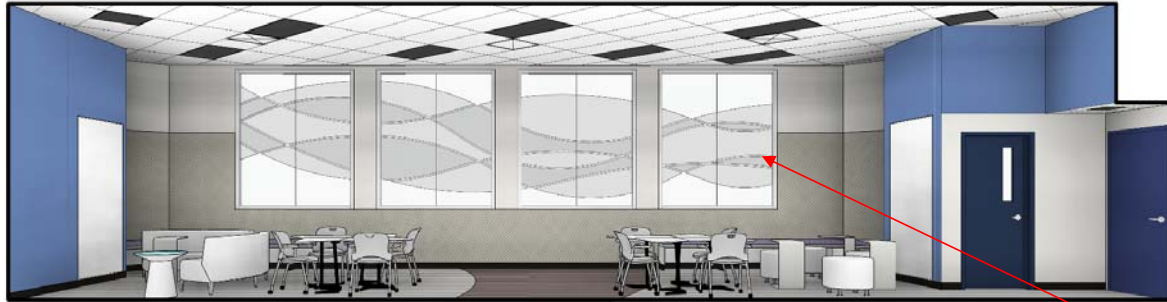




## MODERNIZATION OF (E) MEZZANINE

# FLEXIBLE INSTRUCTIONAL SPACE





VIEW TOWARDS MULTIPURPOSE



VIEW TOWARDS F.I.S. 2



SEATING/STORAGE



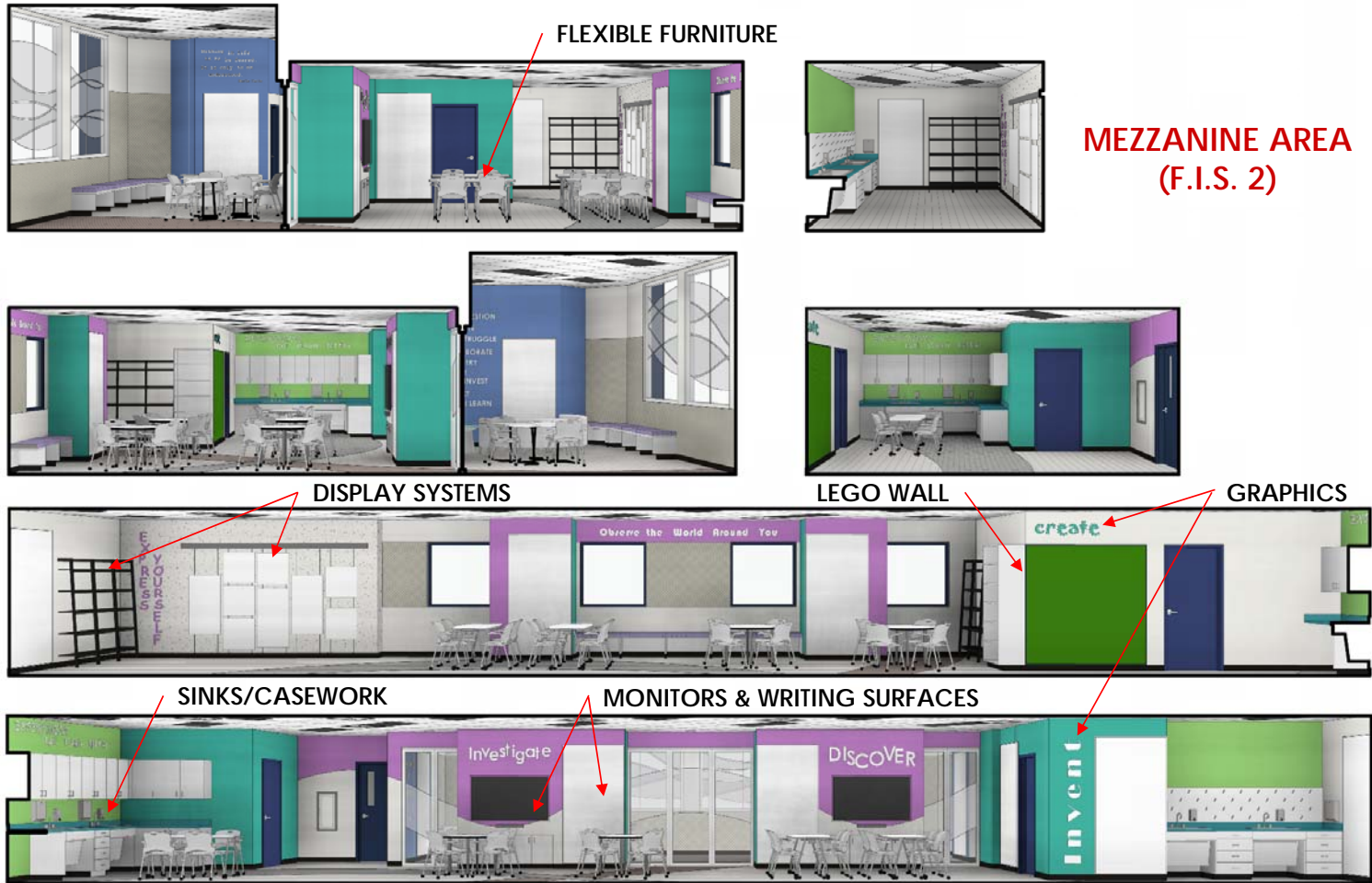
MONITORS  
WRITING SURFACES

BALCONY AREA  
(F.I.S. 1)

GRAPHICS

# FLEXIBLE INSTRUCTIONAL SPACE 1





# FLEXIBLE INSTRUCTIONAL SPACE 2





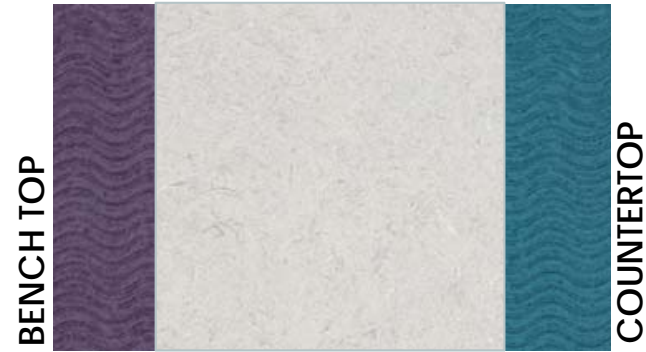
WALL - PAINT (F.I.S. 1)



CUSHION



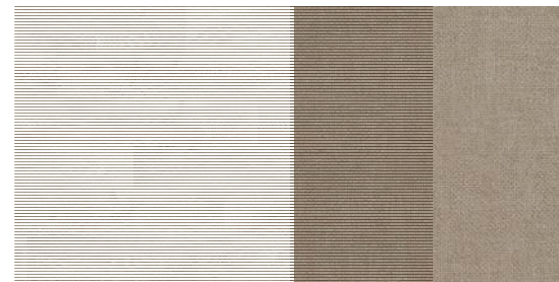
TACKABLE  
PANELING



CABINET




WALL - PAINT (F.I.S. 2)



FLOORING - RESILIENT SHEET

# F.I.S. - MATERIALS & COLORS





# Brooktree Elementary School

Campus Facility Modernization  
& FIS Projects

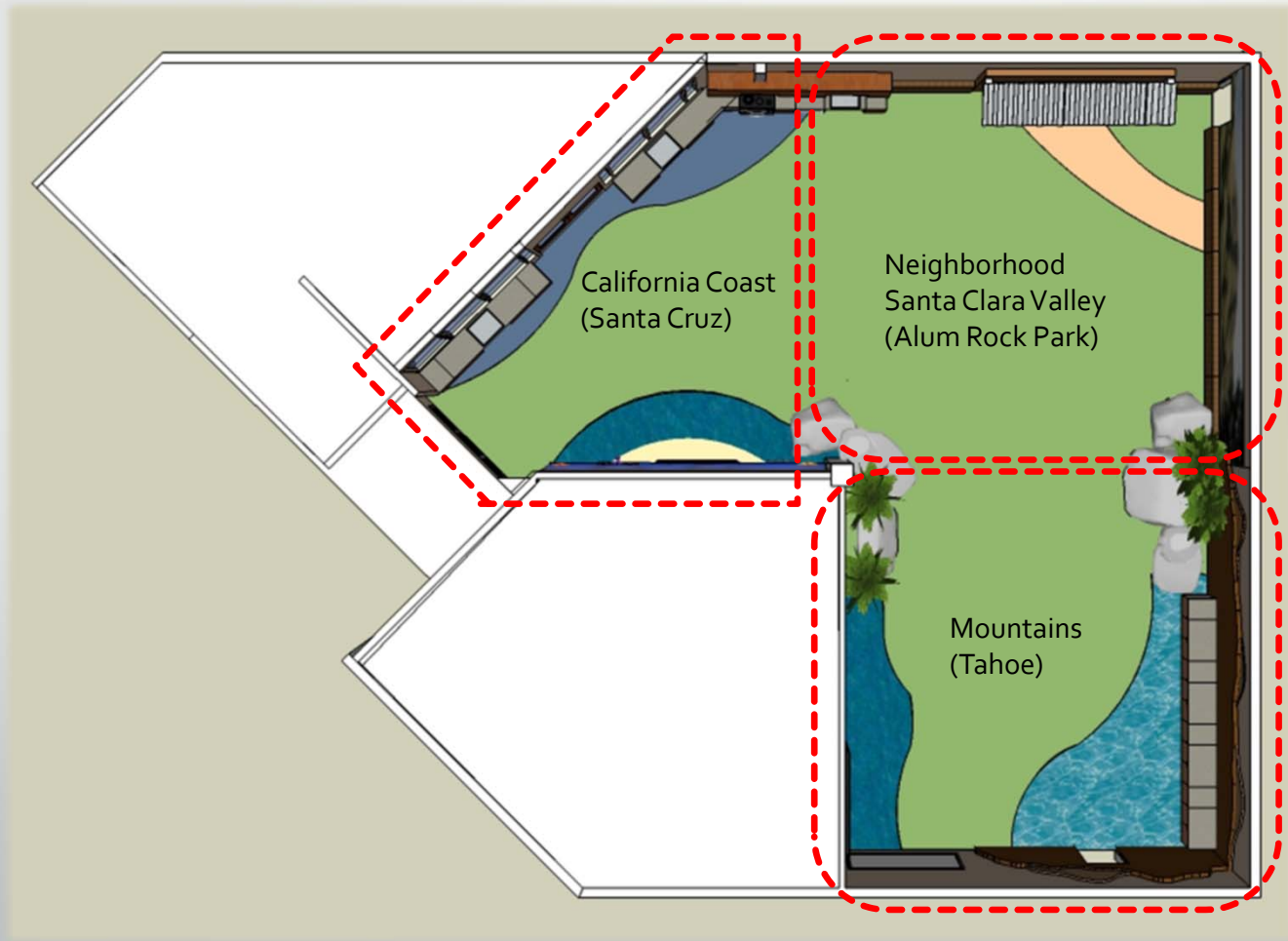
# Scope Overview

- Convert Classrooms to FIS Space
- Classroom Renovations
  - New Finishes – Carpet, VCT, Paint
- Drinking Fountain Upgrades
- Some Glazing Replacement
- Stage Curtain & AV Upgrades





# Flexible Instructional Space – FIS Theme



Flexible Instructional Space - FIS

**ART/SCIENCE**  
Kitchenette  
Sinks

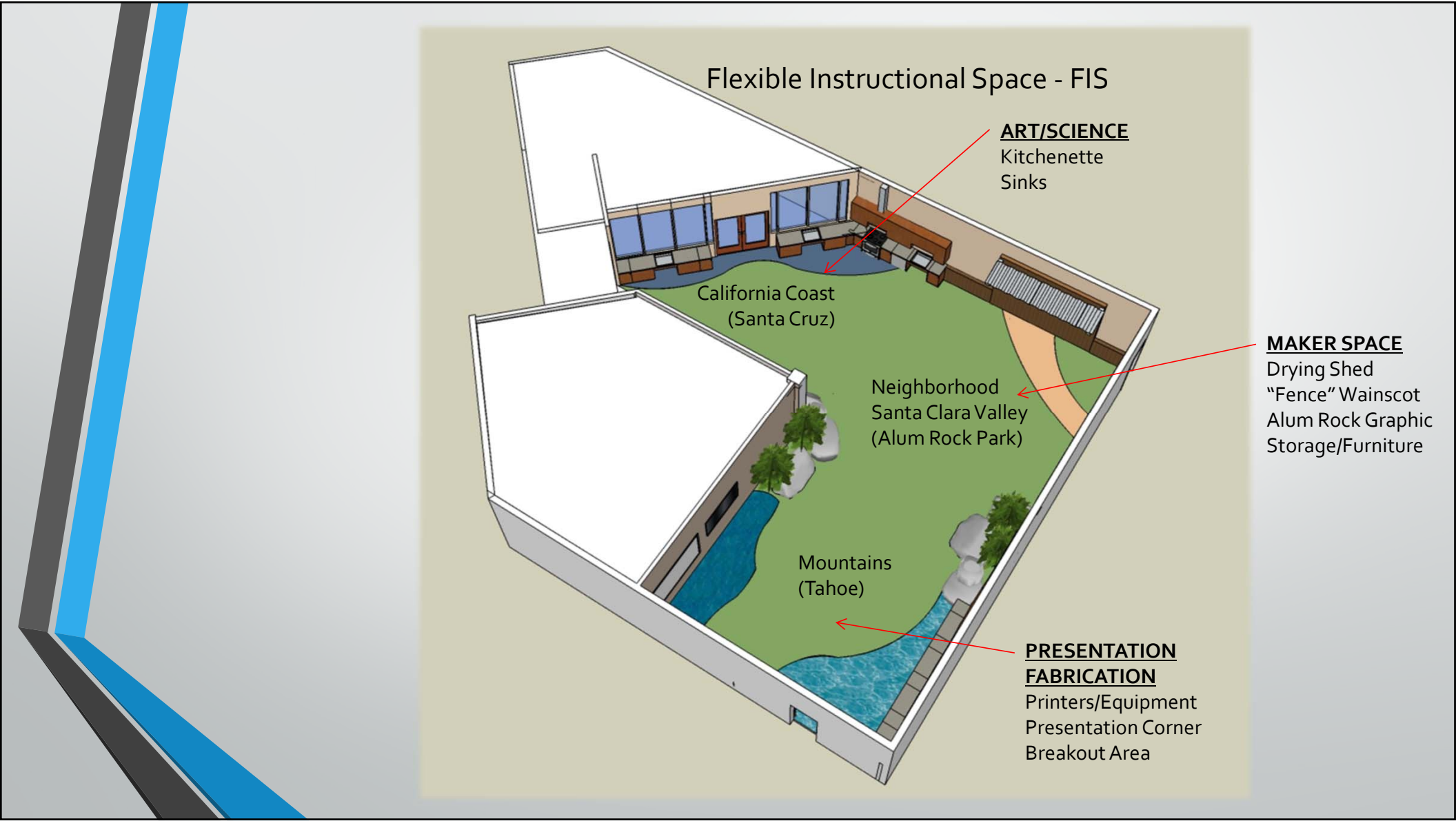
California Coast  
(Santa Cruz)

Neighborhood  
Santa Clara Valley  
(Alum Rock Park)

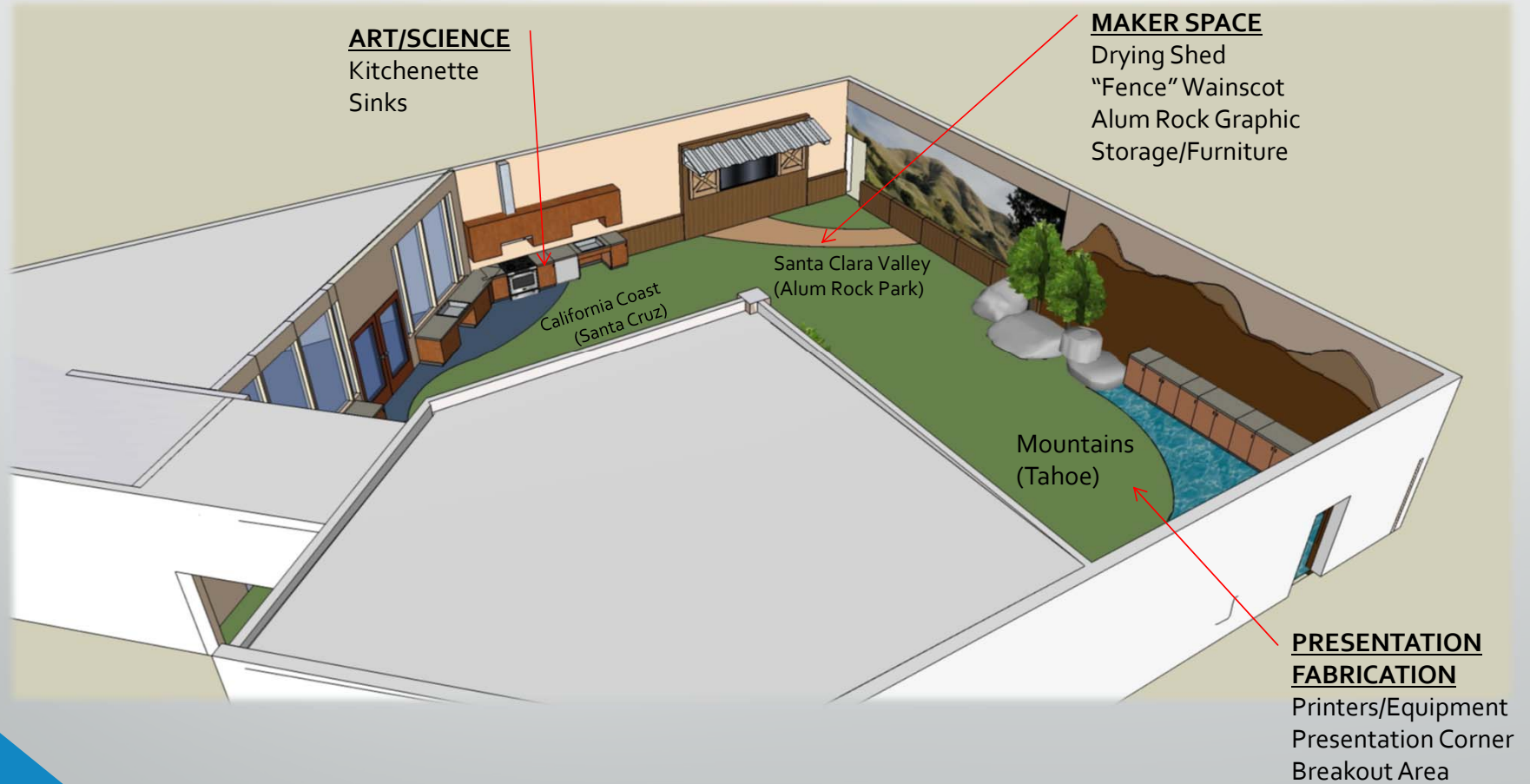
Mountains  
(Tahoe)

**MAKER SPACE**  
Drying Shed  
"Fence" Wainscot  
Alum Rock Graphic  
Storage/Furniture

**PRESENTATION  
FABRICATION**  
Printers/Equipment  
Presentation Corner  
Breakout Area



## Flexible Instructional Space - FIS



## Flexible Instructional Space - FIS

### PRESENTATION FABRICATION

Printers/Equipment  
Presentation Corner  
Breakout Area

California Coast  
(Santa Cruz)



Mountains  
(Tahoe)

Presentation  
Small Group

Neighborhood  
Santa Clara Valley  
(Alum Rock Park)

ART/SCIENCE  
Kitchenette  
Sinks

### MAKER SPACE

Drying Shed  
"Fence" Wainscot  
Alum Rock Graphic  
Storage/Furniture

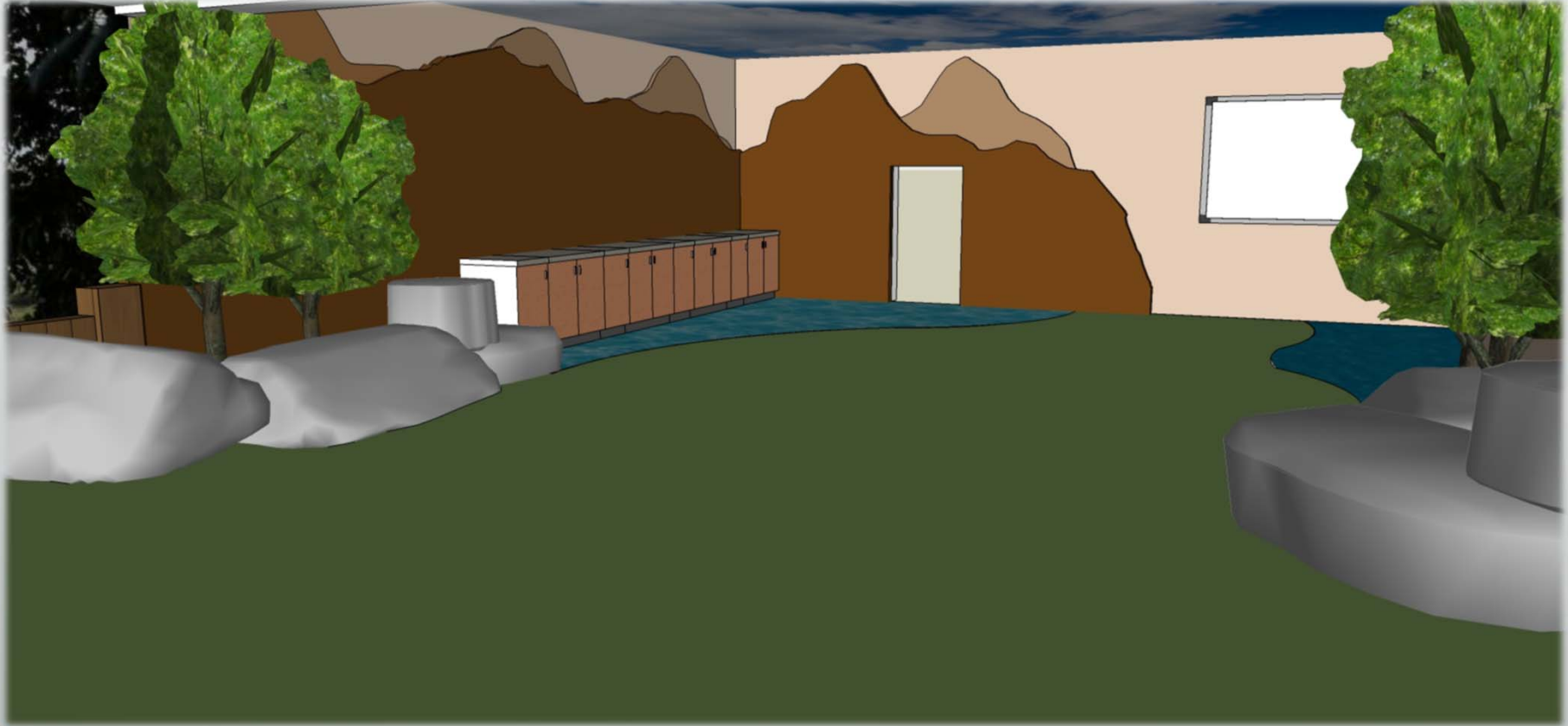
## Flexible Instructional Space - FIS



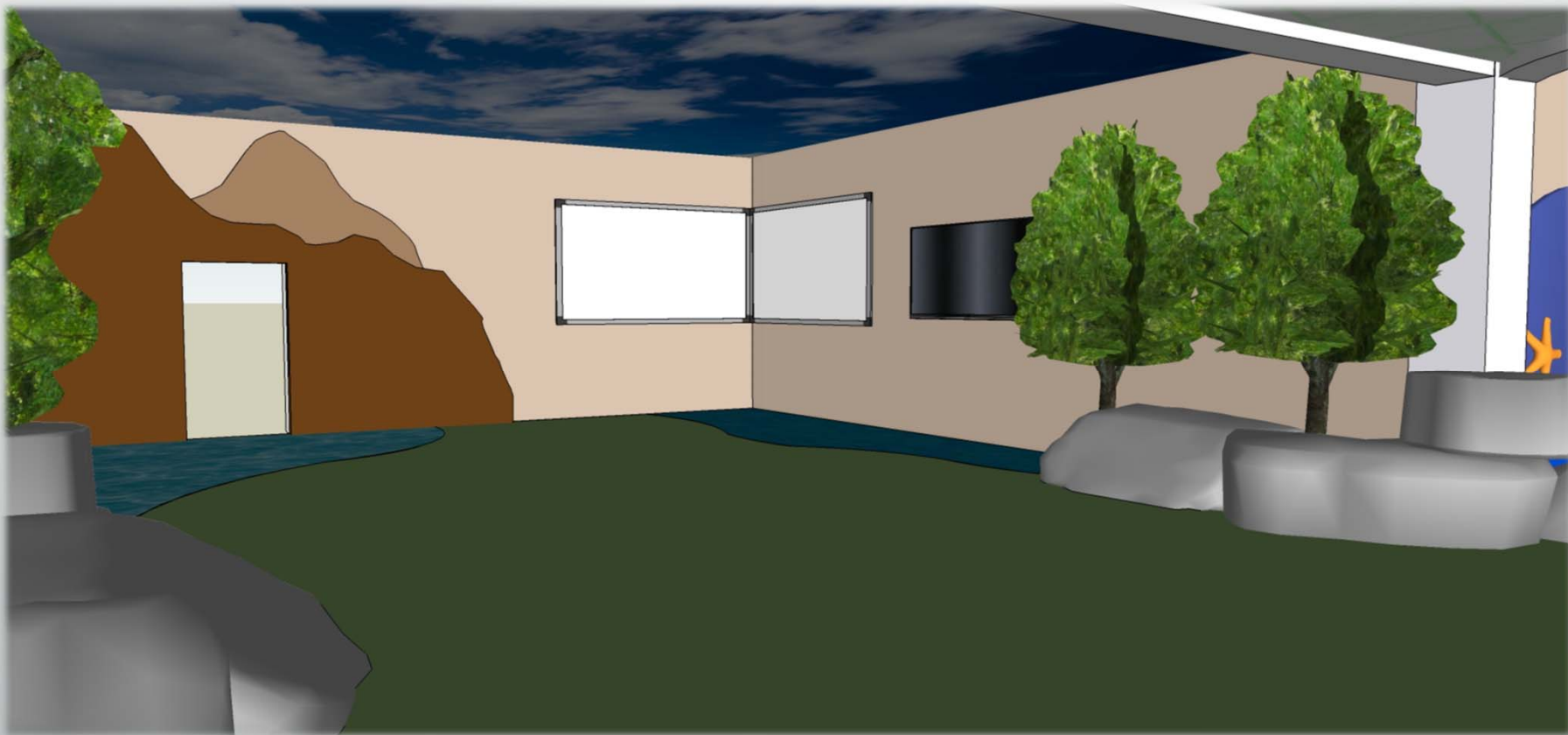
## Flexible Instructional Space - FIS



## Flexible Instructional Space - FIS

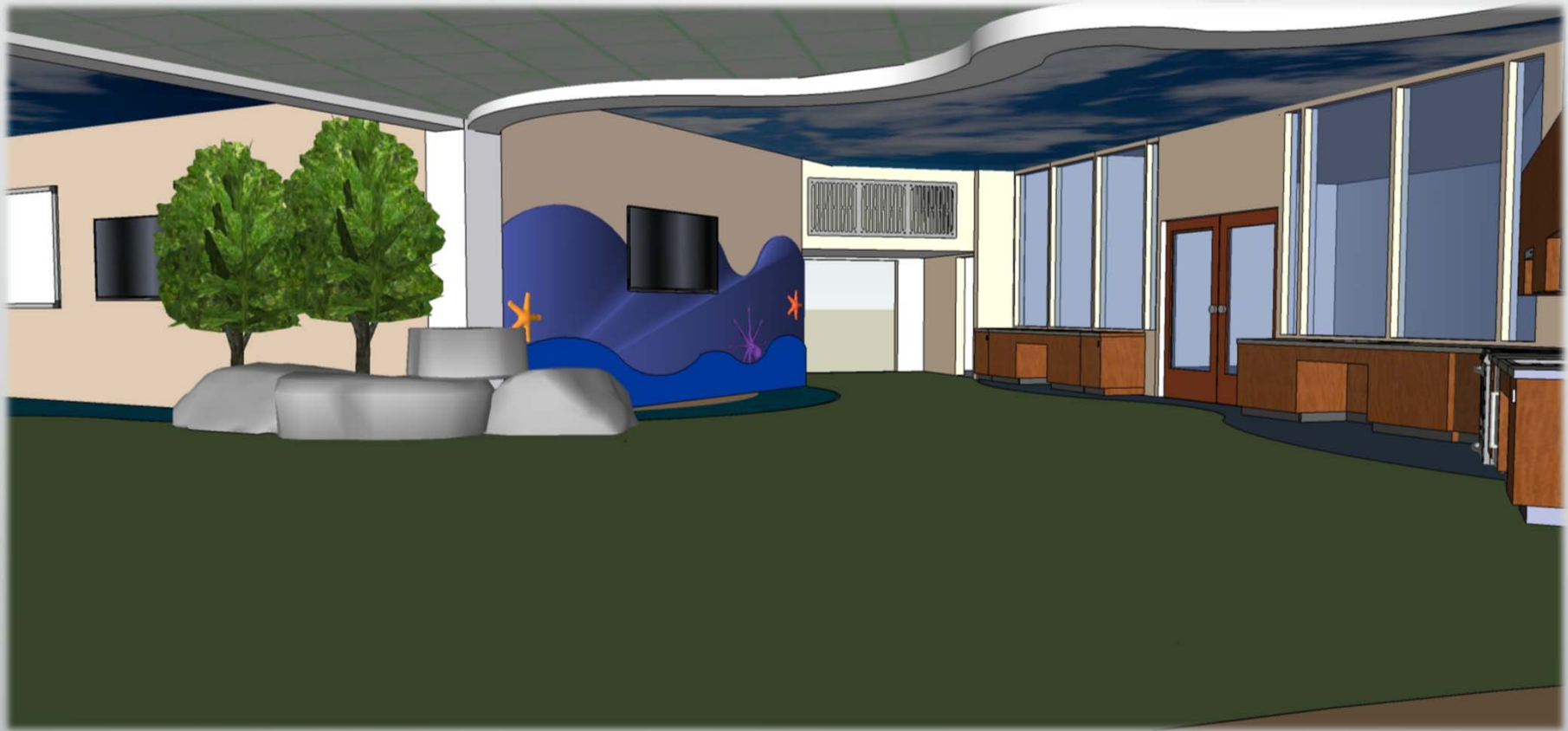



## Flexible Instructional Space - FIS





## Flexible Instructional Space - FIS





# Morrill Middle School

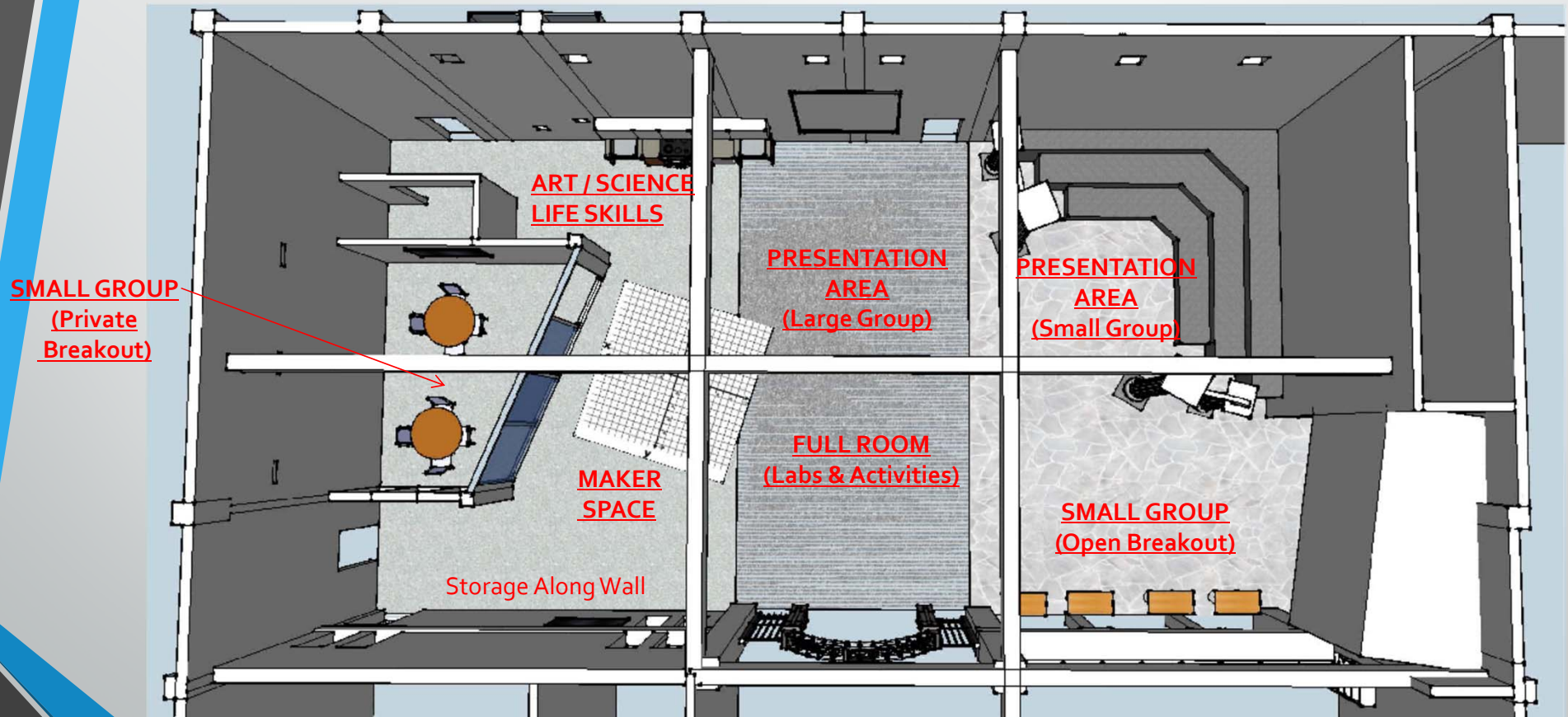
Campus Facility Modernization  
& FIS Projects

# Overview of Modernization & FIS

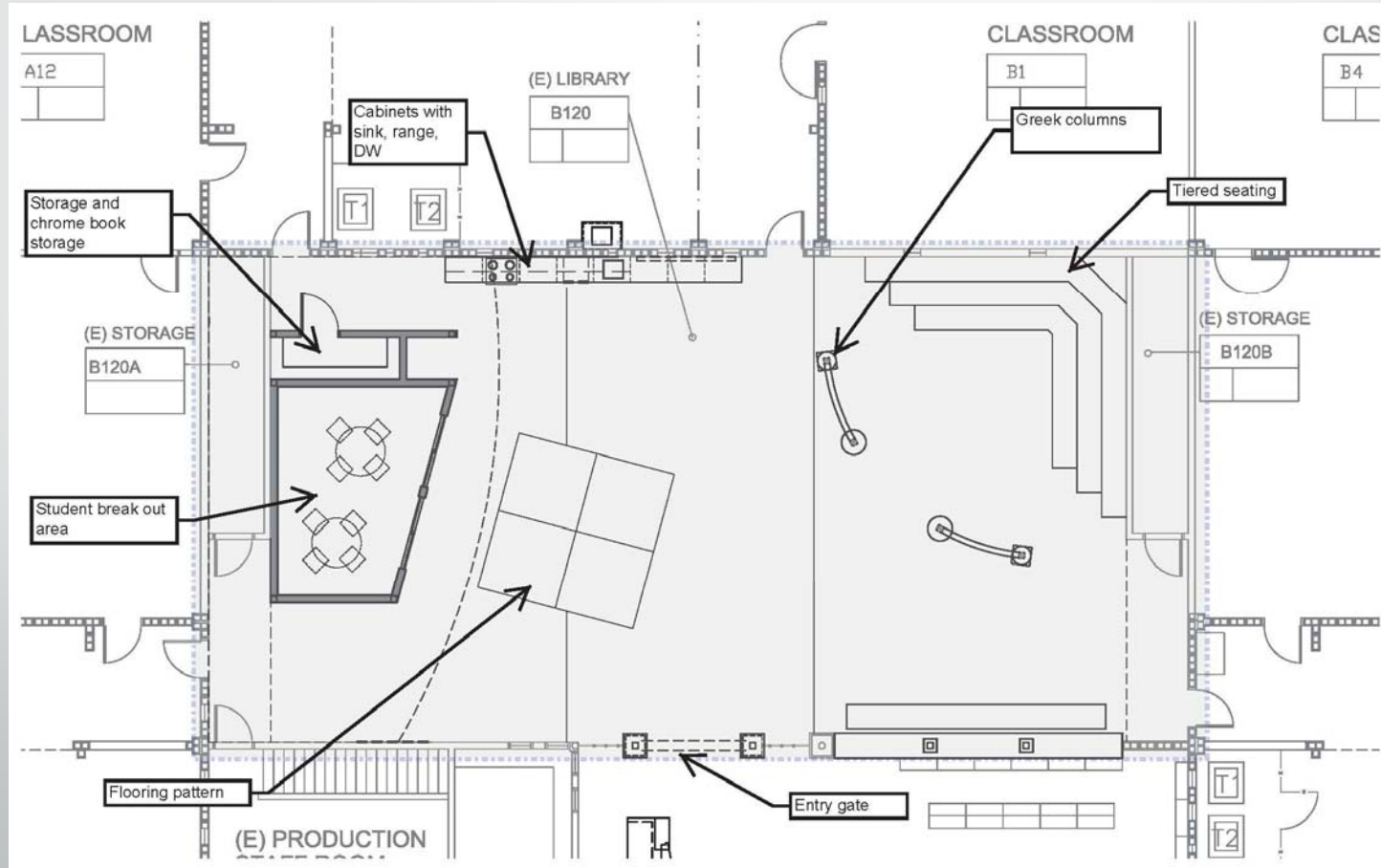
1. Convert portion of Library into the Flexible Instructional Space (FIS)
  - a) Replace light fixtures in area
2. Classroom Renovations
  - a) Throughout campus: Carpet, VCT & Interior Paint
  - b) Music Room (The Barn): Acoustical Upgrades
3. Audio/Visual Improvements
4. Fencing Improvements
5. Restroom Upgrades at main Boy's & Girl's Restroom
6. Access upgrades



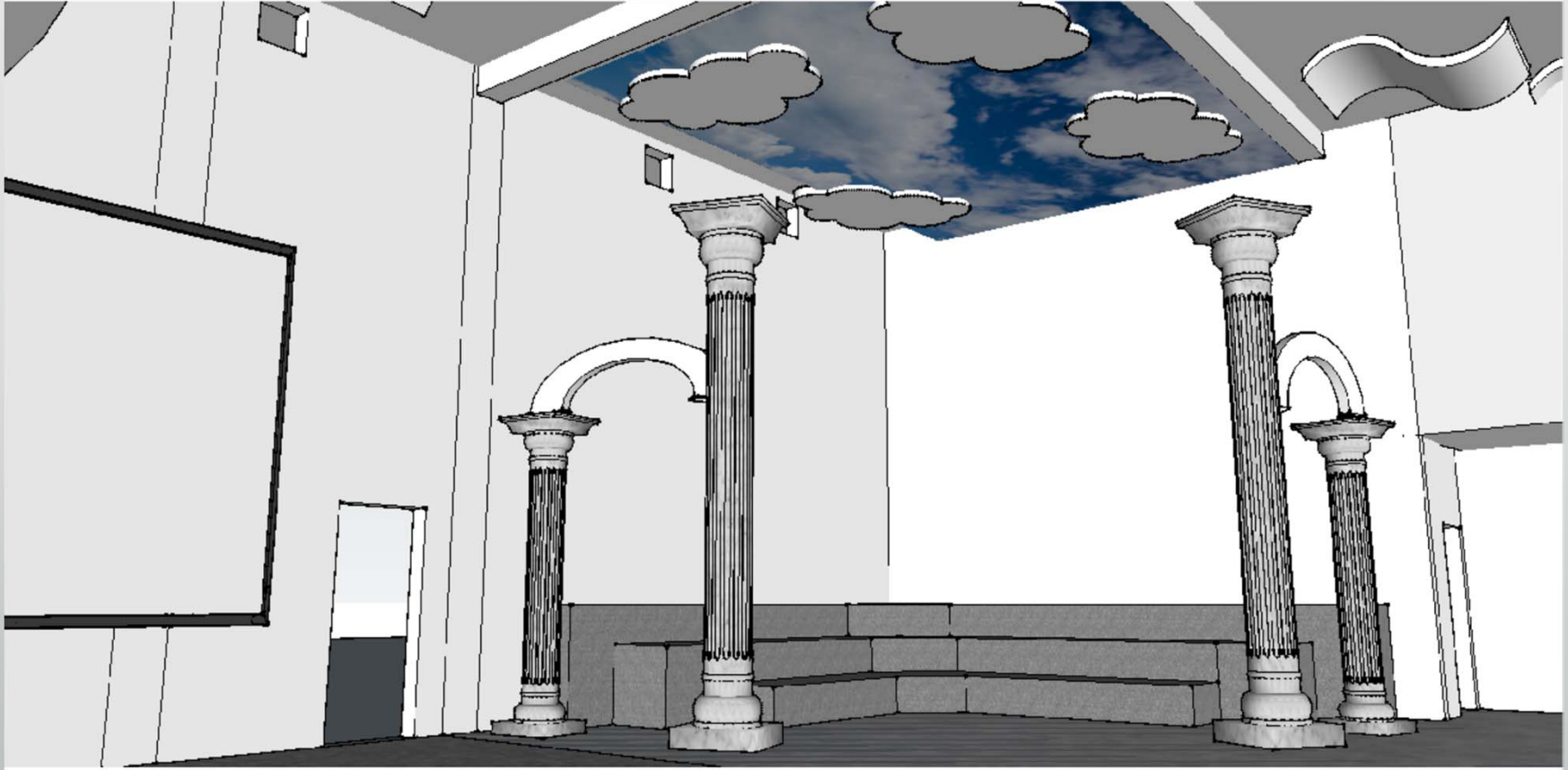
Flexible Instructional Space – FIS  
Theme: College “Café” ; College/Greek Feel; College Corner



# Flexible Instructional Space - FIS



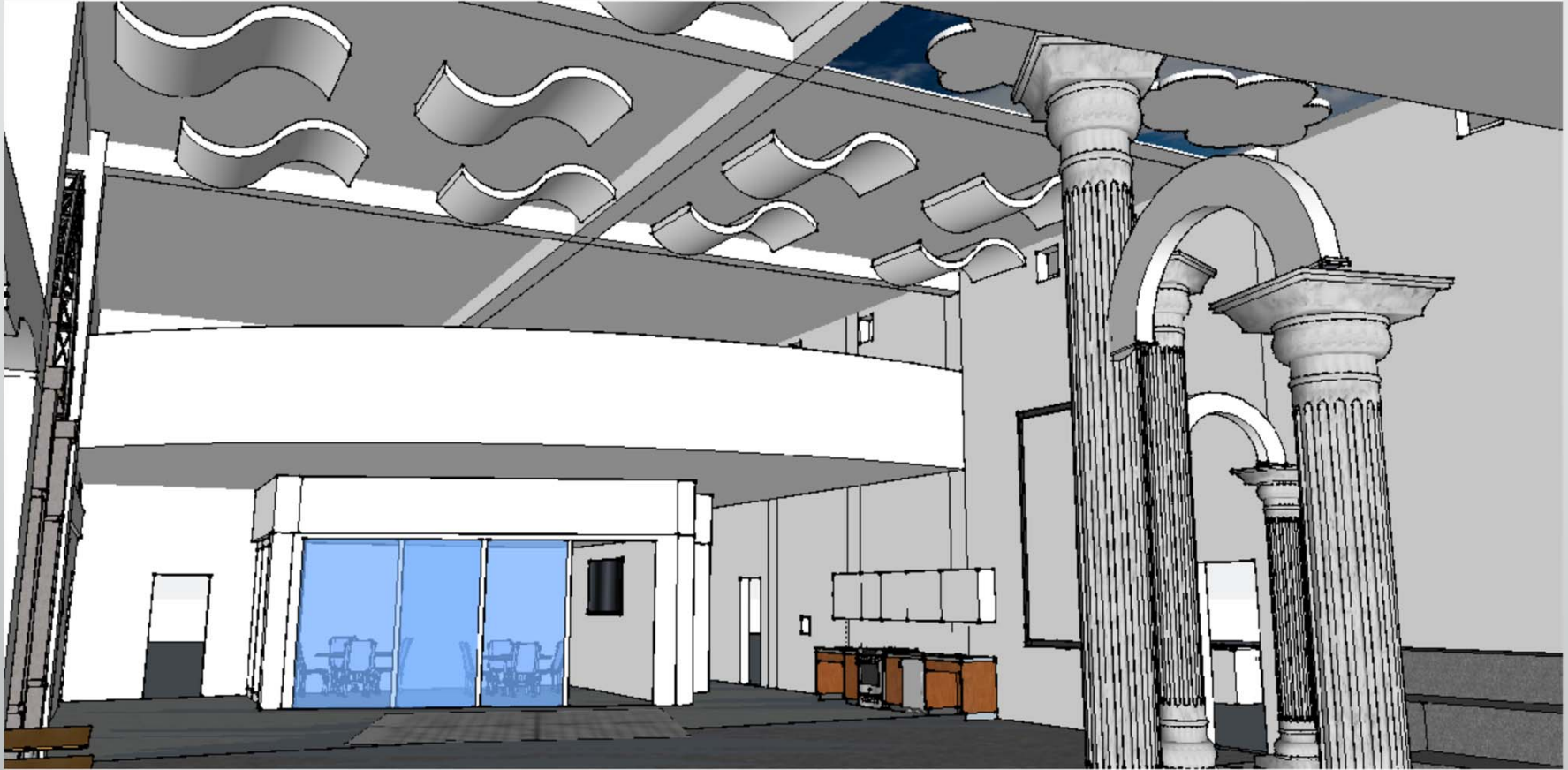
## Flexible Instructional Space - FIS



## Flexible Instructional Space - FIS



## Flexible Instructional Space - FIS

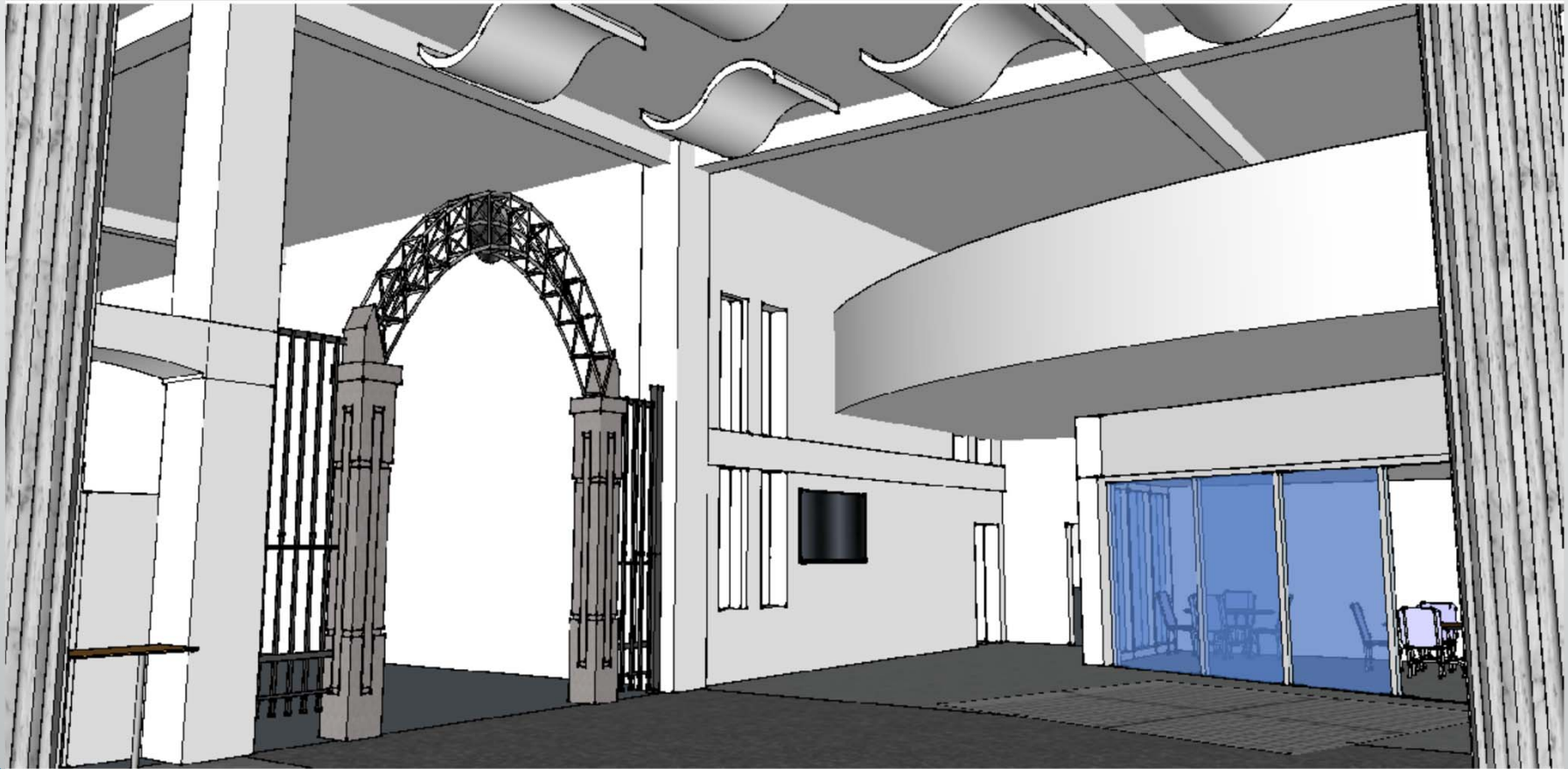




## Flexible Instructional Space - FIS

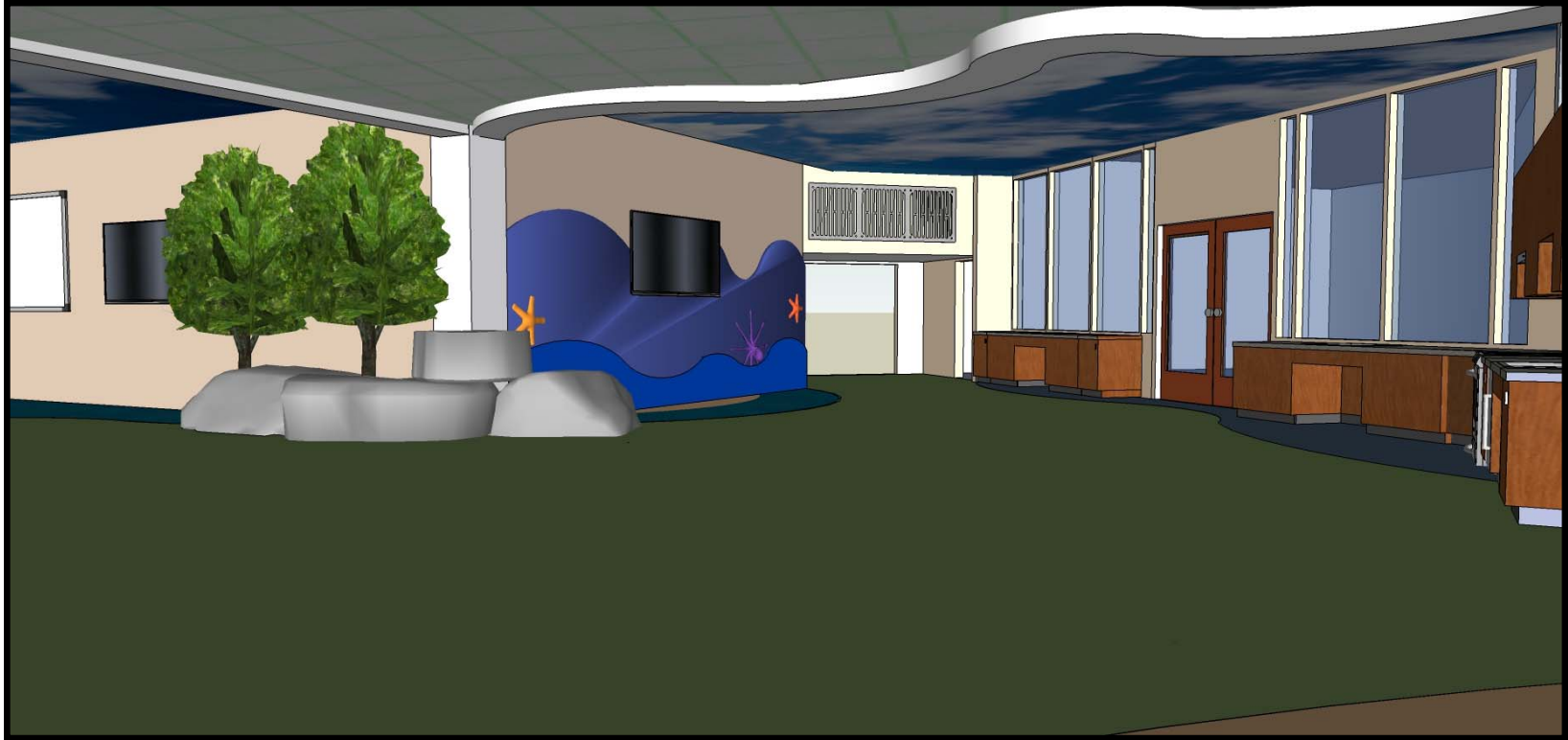


## Flexible Instructional Space - FIS



## Flexible Instructional Space - FIS





Brooktree

Thank You